

PASSPORT WEB TO HOST



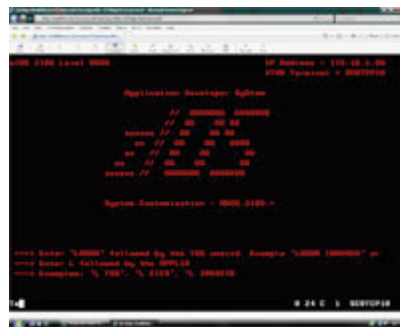
Browser-based terminal emulation for Microsoft Internet Explorer®.

Featuring advanced security, scripting and screen-scraping host integration capabilities, PASSPORT offers fast, reliable access to IBM mainframe, AS/400 and UNIX applications.



PASSPORT: THE MARKET LEADER FOR MICROSOFT-BASED THIN CLIENT TERMINAL EMULATION

PASSPORT WEB TO HOST® is a secure, comprehensive terminal emulation suite for Microsoft Internet Explorer that links Windows desktops to applications running on IBM® mainframe, AS/400 and UNIX® systems.



The ActiveX Client can be deployed from a standard, centralized web server such as Microsoft Windows IIS or IBM WebSphere and is an ideal replacement for the Java-based IBM Host On-Demand®.

PASSPORT WEB TO HOST can also be used to replace older desktop-based terminal emulation programs.

PASSPORT includes royalty-free SSL and SSH security, robust Visual Basic scripting, APIs to reuse existing screen-scraping applications and more. Available through affordable annual subscription licensing, PASSPORT WEB TO HOST can be used to significantly lower host access costs.

DISTRIBUTING PASSPORT IS EASY: USE MICROSOFT IIS, IBM WEBSHERE OR APACHE WEB SERVER

Zephyr makes it very easy to deploy or publish the PASSPORT software. Virtually any web server including a Microsoft IIS Server, IBM WebSphere Application Server or Apache web server, can be used to distribute the ActiveX thin client to the users desktop running IE.

HIGHLIGHTS

- Provides access to IBM zSeries, pSeries and iSeries applications from Microsoft Internet Explorer
- TN3270, TN3270E, TN5250, TN5250E, VT420, VT100, SCO ANSI and Wyse 60 terminal emulation
- Standalone FTP client and integrated FTP file transfer within terminal emulation session
- Supports Windows Vista, XP and 2000
- Advanced SSL security available for each host session
- Advanced SSH security available for each UNIX host session
- Secure FTP file transfer using SSL and SSH security
- IND\$FILE file transfer to IBM mainframe
- Deploy PASSPORT with ease using Microsoft IIS, IBM WebSphere or Apache web server
- HLLAPI available to reuse existing screen scraping applications
- Attachmate-compatible EXTRA! Objects API to reuse existing Attachmate EXTRA! screen scraping applications with Zephyr PASSPORT as an alternative terminal emulation solution
- VB Script to record, edit and run productivity enhancing macros
- Host printing supported through the TN3270E or TN5250E client
- Pass-through printing available for VT or SCO ANSI client
- Customizable keyboard layout, mouse buttons, keypads, toolbars, hotspots, colors, fonts, cursor and more
- Product menus and dialog boxes can be viewed in one of six languages: English, German, Spanish, French, Italian and Portuguese (Europe and Brazil)

Technical Specifications



TERMINAL EMULATION CLIENTS

- TN3270 and TN3270E (IBM mainframe)
- TN5250 and TN5250E (AS/400)
- VT100, VT220, VT420 (UNIX)
- SCO ANSI (UNIX)
- Wyse 60 (UNIX)

TERMINALS EMULATED

- IBM 3278, 3279 models 2, 3, 4 and 5
- IBM 3472G, 3192G, 3179G model 2-5 (APA graphics)
- IBM 3279 S3G model 2 and 3 (PS graphics)
- IBM 5250 model 2 and 5
- IBM 3179-2 model 2
- IBM 3477-FC model 5
- VT100, VT220, VT420
- SCO ANSI
- Wyse 60

HOST PRINTERS EMULATED

- IBM 3287 LU 1 and LU3 mainframe printers
- IBM 3812 LU 1 AS/400 printer
- VT pass-through printing

SYSTEM REQUIREMENTS

- Microsoft Windows Vista, XP or 2000 operating system
- Minimum of 128 MB memory
- TCP/IP connection to TN3270, TN5250 or Telnet server
- Standard 101/102 PC keyboard

DISTRIBUTION AND DEPLOYMENT OPTIONS

- Microsoft IIS Server
- IBM WebSphere Application Server
- Apache web server
- BEA Weblogic

SECURE TERMINAL EMULATION SESSIONS

- Microsoft Secure Channel (SChannel) for royalty-free SSL security on all sessions
- SSH security available for all UNIX sessions (VT, SCO ANSI and Wyse 60)
- Features client authentication

SECURE FTP FILE TRANSFER

- Full compliance with IETF RFC 959 file transfer protocol specifications
- Standalone FTP client and integrated FTP file transfer within terminal emulation session
- SSL security (FTPS) (IETF RFC 4217 Securing FTP with TLS) featuring data channel encryption and client authentication
- SSH security (SFTP) (PuTTY SSH implementation for Win32)
- Asynchronous interface to Windows sockets TCP/IP driver results in fastest file transfer data rate possible with minimum amount of system resources
- Ability to create and save file transfer schemes
- Ability to transfer a list of files
- Information from last 16 file transfers saved
- Send and receive file transfer can be initiated in multiple ways, including drag and drop, menu commands and cut/copy/paste commands
- Look and feel of Windows Explorer with menu bar, toolbar, status bar, three window panes (PC directory structure and file list, host directory structure and file list, connection log and error messages) that can be interactively resized and displayed as icons, details or list
- Files and icons can be sorted by size, date, type, permission, owner and group and can be automatically arranged

IND\$FILE FILE TRANSFER TO IBM MAINFRAME

- Presentation Space and Structured Field transfer methods
- Text, binary and custom file transfer types
- Ability to configure custom IBM 3270 IND\$FILE parameters for CMS, TSO and CICS options and save as schemes
- Information from last 16 file transfers saved



MACROS

- Record, edit and run macros to automate keystrokes and improve end user productivity
- Macro scripting language uses Visual Basic Script syntax
- Recorded macros can be used as Visual Basic programs with minor modification
- Start-up macro can be used to automatically launch host application
- Exit macro can be used to properly exit host application and close the session
- Macros can be used to start other Windows applications
- Macros can be assigned to a key on the keyboard, keypad, toolbar or mouse button
- Option to enable/disable the keyboard while the macro is running
- Ability to execute all PASSPORT menu commands
- Dead key can be recorded
- Any text editor can be used to edit macros

APPLICATION PROGRAMMING INTERFACES

- 32-bit HLLAPI interface available to support existing HLLAPI applications
- Compliant with Windows HLLAPI version 1.1
- HLLAPI short name can be automatically selected or manually specified
- Attachmate compatible EXTRA! Object API
- Macro API (subset of HLLAPI)
- PASSPORT Object API available for new screen-scraping projects

EXECUTION OF EVENTS WITHIN HOST SESSION

The following events can be executed using any keyboard key, keypad, toolbar icon, mouse click or hotspot:

- Launch a URL
- Send a host key, text character or string of text characters to host
- Send an APL character to the host (3270 sessions only)
- Execute a macro
- Execute any menu command
- Run an application, including Word, Excel, etc.
- Apply keyboard, hotspots, keypad, colors or toolbar settings
- Tile, cascade or minimize all sessions

CONNECTION FEATURES

- Display connection information in HTML format
- Auto Reconnect
- Telnet Device Type Override
- Dynamic screen size configuration for 3270 sessions
- Support for 3270 extended attributes
- Scroll back buffer for 3270 sessions
- Support for connection to generic, dedicated, pooled, and associated LUs
- Full support for NVT, SSCP-LU, and LU-LU sessions
- Hot back up for connection to alternate IP host names
- Host connection time-out parameter
- TN3270E Responses
- TN3270 Non-SNA Command Chaining
- Keep Alive to maintain persistent connection

SESSION PROFILE FEATURES

- Ability to open, save and create new session profiles
- Ability to save layouts of multiple sessions as desktop icons
- Ability to use a Windows system variable in the TN3270/TN5250 LU Resource name
- Ability to lock and secure session profiles with password
- Ability to customize text used on window title
- Ability to enable/disable commands of the menu bar
- Ability to tile and cascade active sessions
- Custom .WAV file can be used for sound if signaled by host application

DISPLAY SESSION FEATURES

PRINT SCREEN

- Host screens can be printed to local or LAN attached printers
- Host screens can be printed to a disk file
- Page margins can be set
- Optional Header/Footer lines can be configured to print on each page
- Capture a series of multiple host screens then send to printer all at once
- Ability to print multiple host screens on a single page

CLIPBOARD

- Cut, Copy, Copy Append, Copy Graph, Paste, Paste Continue

Technical Specifications



- Menu accelerator keys for most menu commands
- Paragraph format copy mode for word processing
- Tabular format copy mode for spreadsheets
- Block, stream and field modes for pasting text
- Text selection viewed as dotted rectangle or reverse video
- Cut text can be replaced with either nulls or spaces
- Line mode selection available for VT, SCO ANSI and Wyse 60 sessions

COLORS

- Multiple color schemes can be created and saved
- Colors can be selected from the Windows color palette
- Colors can be modified for base and extended colors, OIA line, and screen background
- Extended attributes provide 7 color display, underline, reverse video

CURSOR

- Underline or block cursor
- Cursor blinking on or off
- Cursor ruler guide can be a full cross hair, vertical only or horizontal only
- Cursor toggle during Insert mode
- Cursor position can be shown on OIA line or Windows status bar

FONTS AND SCREEN DISPLAY

- PASSPORT terminal, thin bit-map raster and true type fonts provided
- Full APL font support
- Any Windows fixed pitch raster or true type font can be selected
- Font size automatically adjusts to Window size
- Fixed font size can be selected with horizontal and vertical scrolling
- Screen sizes for TN3270 (24x80, 32x80, 43x80, 27x132)
- Screen sizes for TN5250 (24x80, 27x132)
- Screen sizes for VT (24x80, 24x132, 32x80, 32x132)
- Screen sizes for SCO ANSI (25x80, 25x132, 38x80, 38x132)
- Screen sizes for Wyse 60 (24x80, 24x132, 25x80, 25x132, 42x80, 42x132, 43x80, 43x132)

GRAPHICS

- TN3270 APA mainframe graphics fully supported
- TN3270 Program Symbol Sets A through F are fully supported
- Terminal Resolution and High Resolution support

GRAPHICS INPUT CURSOR

- 4 different graphics input cursor types
- Ability to copy graphics to clipboard or print
- 3270 Color and Attribute key support

HOTSPOTS

- Ability to double-click specific text on the screen to perform a function
- Multiple hotspot schemes can be created and saved
- Default hotspots provided for PF keys and other common host keys
- Hotspots can be viewed as reverse video button or invisible

KEYBOARD FEATURES

- Interactive graphical keyboard customization
- View keyboard layout in HTML format
- PASSPORT, Attachmate EXTRA!, IBM Personal Communications and NetManage RUMBA keyboard layouts
- DEC LK-201 keyboard layout
- Full APL keyboard layout
- Multiple keyboard maps can be created and saved
- Keyboard entry assist with word wrap, margins and tab settings
- Type ahead
- Auto repeat for TN3270/TN5250 Aid key
- Option to Reset INSERT mode when a TN3270/TN5250 Aid key is pressed
- Option to restrict cursor movement to unprotected TN3270/TN5250 fields only
- Option to configure Backspace key for TN3270/TN5250 sessions
- Select areas of text using keyboard shifted arrow keys
- Automatic reset of X Inhibit condition using arrow keys
- Jump directly to a session using keyboard keys
- Numeric field checking
- Tablet PC writing stylus pen compatibility



KEYPAD

- Pop-up keypad accesses common host keys and macros with a single mouse click
- Multiple keypads can be created and saved
- Keypad can be interactively docked, resized and positioned
- Keypad size can range from 1x1 up to 14x8 rows and columns of buttons

MOUSE

- Left, right, single and double click mouse actions can be configured or fully customized
- Wheel Scroll Up or Scroll Down can be customized
- Pop-up floating menu to access common menu commands

TOOLBAR

- Multiple toolbar schemes can be created and saved
- Small or large toolbar icons, with or without text, with or without tool tips
- Custom bit-map icons can be imported and used on toolbar
- Toolbar can be interactively docked, resized and positioned

VT AND SCO ANSI FEATURES

- Scroll back buffer
- Extended text color support
- Double height and double width characters
- Scrolling speed is configurable
- Answer back message is configurable
- Ability to highlight text in either line mode or block mode

HOST PRINTING FEATURES

- Host printing through TN3270E or TN5250E client
- TN3270E generic, specific and associated printer support
- TN5250E generic and specific LU Names
- VT pass-through printing
- LU Name, printer status and SSL indicators
- Use of right mouse button to select printer, edit properties, etc.
- Font selection of local PC fonts
- Transparent printing for 3270 printer sessions
- Host print transform for 5250 printer sessions
- End of print job detection options

DIAGNOSTIC TOOLS

- Connection Log
- Data stream trace facility
- Low level trace facility
- FTP trace facility
- HLLAPI trace facility

INTERNATIONAL SUPPORT

- International host code pages
- European currency symbol support
- Multi-national keyboard support
- International Dead Key
- Product menus and dialog boxes can be viewed in one of six languages: English, German, Spanish, French, Italian and Portuguese (Europe and Brazil)



Zephyr excels at connecting Microsoft Windows desktops and servers to IBM mainframe, AS/400 and UNIX host applications. Whether using our Vista-certified PASSPORT terminal emulation or a PASSPORT host integration client or server, Zephyr helps organizations lower host access costs through secure, standard TN3270, TN5250, VT, SCO ANSI, Wyse 60 and FTP solutions.

Our impressive client list features many notable U.S. and international organizations, including Banco BPI, Blue Cross Blue Shield, Canon, Cessna, Daimler Bank AG, Hormel, Huntington Banks, LBBW, Nationwide Insurance, Otis Elevator, Progressive Insurance, Saks, State of California, Wachovia and many more.

3355 W. ALABAMA, SUITE 1220
HOUSTON, TX 77098 USA

800-966-3270
TEL: 1-713-623-0089
FAX: 1-713-623-0091
info@zephyrcorp.com

69 HIGH STREET
HARROLD, BEDFORDSHIRE MK43 7BH UK

TEL: 44 (0) 1234 721755
FAX: 44 (0) 1234 420317
rmartin@zephyrcorp.com